



LASER TABLE

LS100



GRAVOTECH

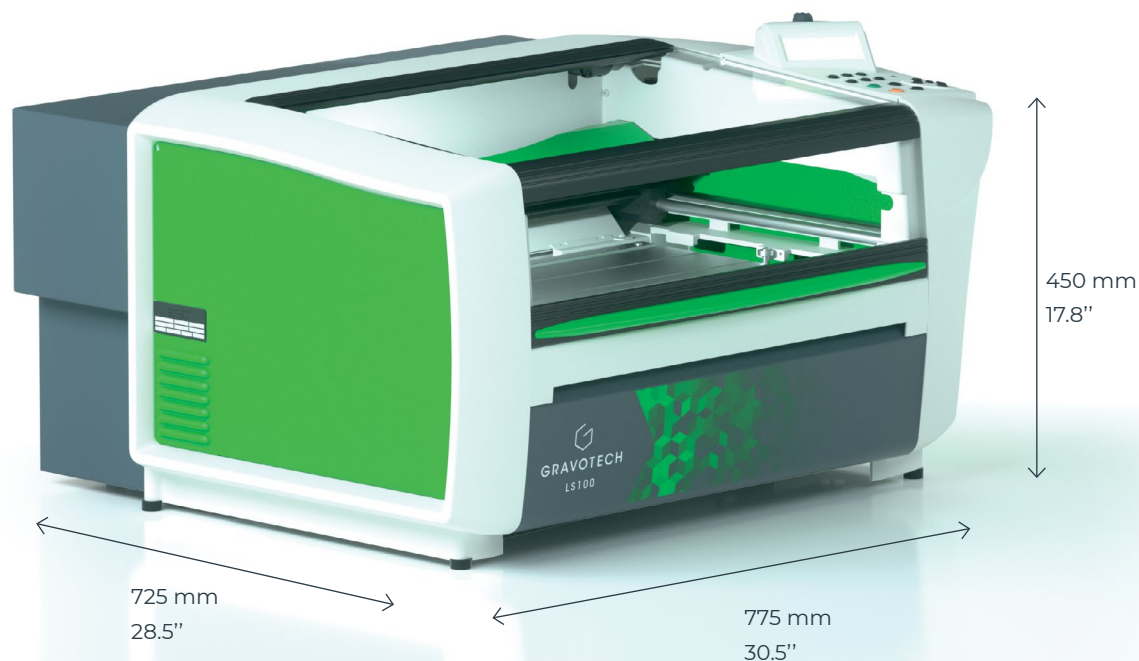
by  **BRADY**



LASER TABLE LS100

CO2 laser engraver for signage, creative cutting, and personalization.

The LS100 is an easy to operate and compact laser engraver to cut and mark a wide range of materials. With its premium build, low maintenance and dedicated software, this small laser etching machine is the solution to be trusted for any application.



SINGLE WORK ENVIRONMENT

LS100 is a premium solution, it is the only gantry laser on the market made of one-piece aluminum chassis, that includes multi-technology professional CAD/CAM software and an RF laser source.

THE SWISS ARMY KNIFE OF LASERS

LS100 is a silent and compact laser engraver adaptable to industrial, commercial and office settings. Engrave glass, create plastic labels, shape acrylic, wood, cut, mark, and define folding lines on paper: this laser cutting and engraving machine can adapt to your every need.

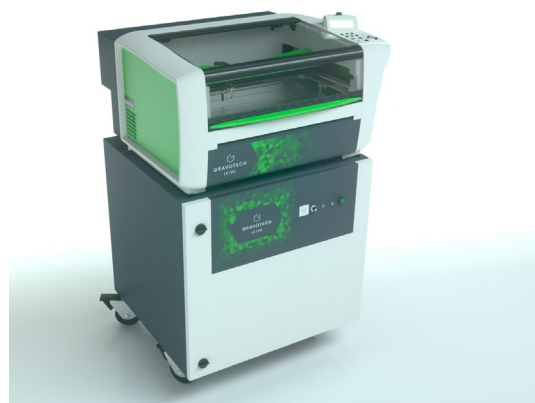
EASY WORKFLOW

One by one or by batches, the LS100 improves your productivity thanks to time-savings features: automatic touch sensing, embedded control dashboard and backlit marking table with a wide front-loading door.

SEE OUR VIDEO



KEY FEATURES



Smart Laser Engraver

The LS100 is automated, silent and space-efficient.

No bulky and loud separate blower or compressor, the exhaust and air assist are integrated and triggered automatically.

Place the items into the well-lit cabinet and front-loading door and let the laser detect their height for accurate positioning.

All lasering parameters are saved in a material library for increased productivity.

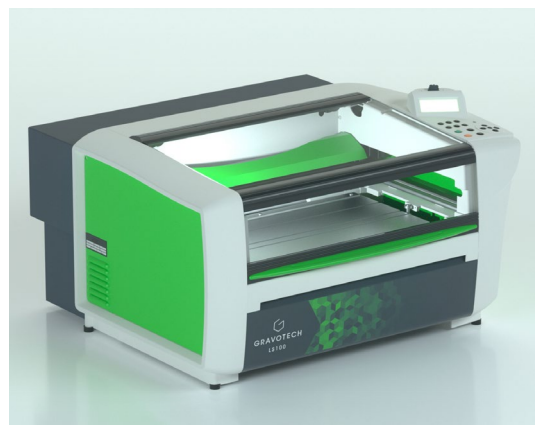


Dedicated And Multi-Technology Software

The LS100 is available with Gravostyle, our unique dedicated software: create and edit designs, vectorized logos and pictures, use specific fonts in every languages and alphabet, compose in Matrix mode.

This software is also an advanced piloting tool for your LS100.

This CO2 laser engraver can also be used with third party software.



Energy Version

The LS100 is the only premium gantry laser etching machine with this size.

It also exists in the Energy version, an alternative for first-time buyers or those on a reduced budget.

It uses a different laser source that ensures the same cutting quality but with a slight reduction in engraving quality.

This option is only available at Gravotech.

LEARN MORE ABOUT THE LS100



APPLICATIONS



Funeral plaques and headstones engraving



Engraving & laser cutting of custom ink stamps



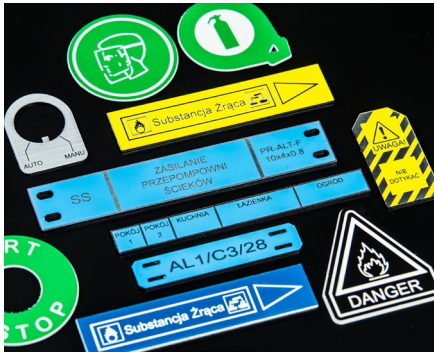
Pet and dog tags engraving



POP displays and sign engraving



Express engraver



ID tags

MATERIAL CHARACTERISTICS

| Technology | | CO2 |
|------------|---------------------------|-------|
| Materials | Rubber | ◻◻◻ |
| | Paper, cardboard, cork | ◼◻◻ |
| | Leather | ◻◻◻◻◻ |
| | Glass, crystal | ◼ |
| | Anodized aluminum | ◼ |
| | ABS | ◻ |
| | Acrylics & derived | ◻◻◻ |
| | Wood, varnished wood, MDF | ◼◻◻◻ |
| | Engraving materials | ◼◻◻◻ |

◻◻◻ = Cutting

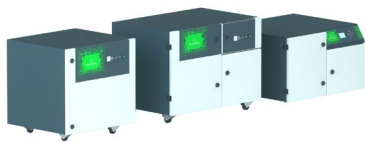
◻◻◻ = Engraving / Deep marking

◼ = Marking / Etching

MAKE YOUR SAMPLES

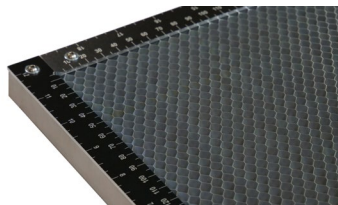


ACCESSORIES



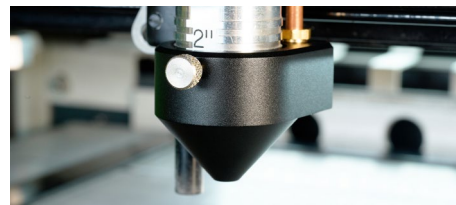
Exhaust system

Laser fume extractors guarantee clean and safe work and working environment. Their role is to suck up dust and gases and filter out odours produced during machining.



Laser cutting bed

Laser cutting bed to help you with your cutting jobs and prevent damage to the part or laser engraving machine.



Laser nozzle

Laser nozzle to help you with your cutting jobs and to protect the lens of your laser engraving machine.

SOFTWARE : GRAVOSTYLE™



Expert software made by engravers for engravers

Benefit from advanced possibilities and save time! Unique features available: Braille, Photostyle, Print & Cut, and more. Due to our history of making engraving machines, we have a full understanding of the engraving process.

Gravostyle™: unique software for laser and rotary

No need to learn how to use another software, switch in one click on the Gravostyle™ interface to set-up laser or rotary engraving!

SERVICE & SUPPORT



Training

Standard or customized training sessions, at your place or online.



Technical Support

Gravotech experts dedicated to support and guide you.



Maintenance

Gravotech has established a dedicated program for each machine type, including cleaning, adjustments, safety checks and more.

TECHNICAL DATA

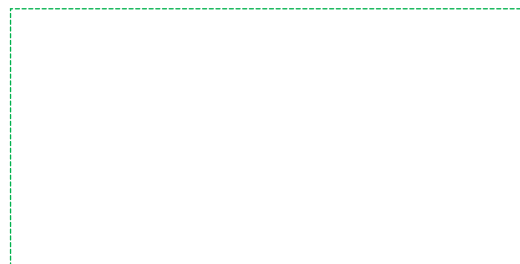
| | LS100 |
|--------------------------------|--|
| Laser source | CO2 |
| Available power version | 25 W - 30 W - 40 W - 60 W |
| Available lenses | 1.5" - 2.0" - 2.5" - 3.5" - 4.0" |
| Marking area max | 460 x 305 mm (18 x 12 in) |
| Max object height | 145 mm (5.7 in) |
| Max object weight | 15 kg (33 lbs) |
| Machine dimensions (L x W x H) | 775 x 725 x 450 mm (30.5 x 28.5 x 17.8 in) |
| Weight (kg) | 43 kg (94.8 lbs) |
| Z axis auto | 145 mm (5.7 in) |
| Noise (dB a) | ≤ 70 |
| Point & shoot | Yes |
| Operating temperature | 10 °C (50 °F) - 35 °C (95 °F) |
| Connection to computer | USB |
| Maximum speed | 2540 mm/s (100.000 in/s) |
| Classification | CDRH: Class 2 |
| Beam diameter | 0.1 mm (0,004 in) to 0.4mm (0,016 in) |



info.uae@gravotech.com
[+971 4 456 5729](tel:+97144565729)
www.gravotech.ae

GRAVOTECH DMCC
SABA 1 Tower, Office 1307
Jumeirah Lake Towers,
Dubai, United Arab Emirates

Distributed by:



Follow us:



[gravotech.off](https://www.instagram.com/gravotech.off)



[Gravotech Group](https://www.youtube.com/GravotechGroup)



[Gravotech](https://www.linkedin.com/company/Gravotech)



[Gravotech - Gravograph](https://www.facebook.com/Gravotech-Gravograph)

Gravotech-LS100-03-2025-en-AE. The information, photos and illustrations contained in this document are not binding and can be modified without notice.

This document is non contractual. Gravograph™, Gravotech™, TechniFor™, WeLase™, Gravostyle™ and Dedicace™ are used, pending or registered trademarks of a Gravotech Group company.

©Gravotech Marking - 466 rue des Mercières - Z.I. Périca - 69140 Rillieux-la-Pape - France. Société par Actions Simplifiée with a share capital of 26 749 016 € - SIREN : 334 818 515 RCS Lyon.