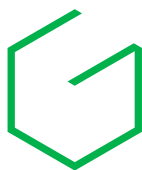
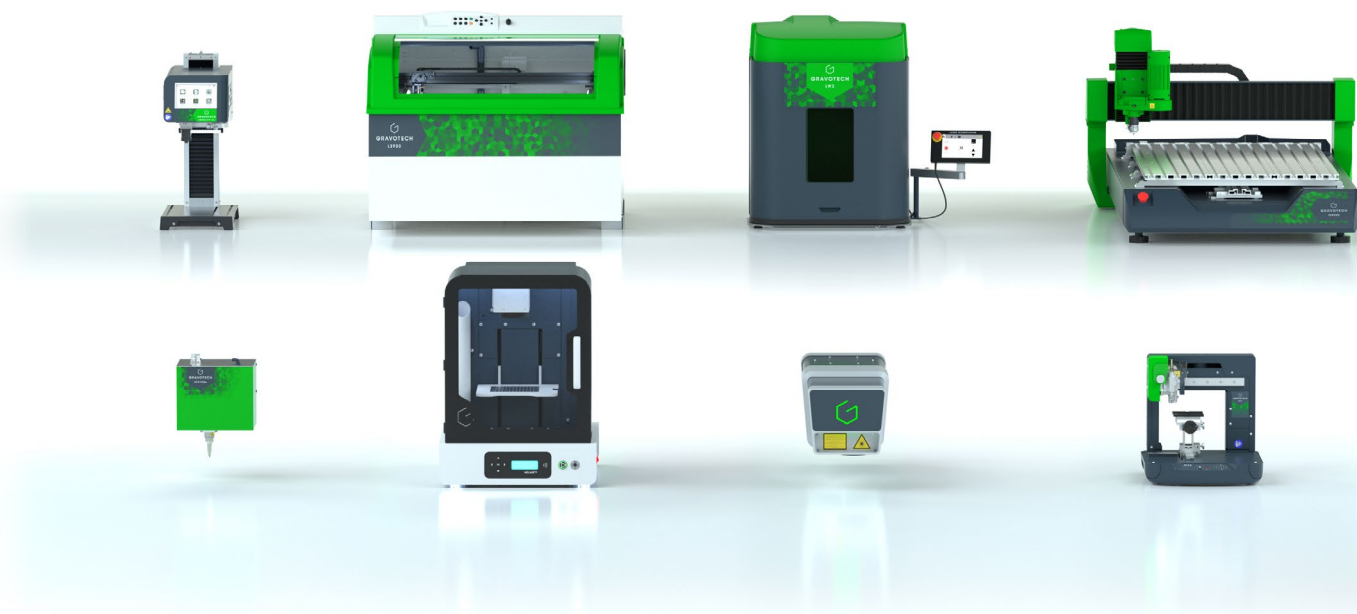




ENGRAVING & MARKING OVERVIEW



GRAVOTECH
E X P R E S S I O N O F T H I N G S

CONSUMABLES

Our material range has been specially developed for engraving and cutting. "Surface" or "reverse" engraving, laser marking or cutter engraving, also compatible with digital printing, all our ranges of plastic, metal or stratified materials are available in a spectrum of colours, thicknesses, and finishes.



Laser materials



Rotary materials



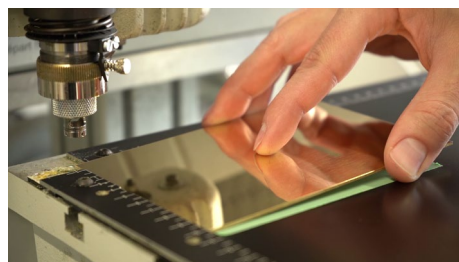
Engravables



Signage



Cutters & Inserts



Engraving supplies

SOFTWARE

Our engraving and cutting expertise lead us to build our own software. Create your engraving and cutting paths, pilot your machines, design your 3D jewelry, Anything is possible!



ABC

ABC software is the easiest engraving software for Gravotech laser and rotary machines. Engrave in only 3 simple steps, from a computer or a tablet!



GRAVOSTYLE™

One-of-a-kind piloting software for Gravotech laser and rotary engraving machines.



LASERTRACE

Lasertrace is the Gravotech industrial software for traceability and identification. Various functions are available in a simple and friendly interface, for all industrial production needs.



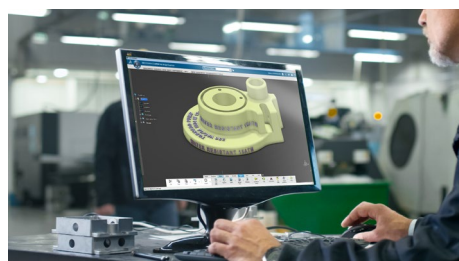
3DESIGN

Cutting edge 3D software for jewelry design that will keep your business ahead.



TYPE EDIT

For over 30 years, TYPE EDIT is the complete CAD/CAM software solution. Taking your ideas and drawings, through design and machining to production.



TYPE3-CAA

TYPE3-CAA is the only add-on available in CATIA® environment for text creation and mapping.

SERVICE & SUPPORT

With our direct presence in over 50 countries, we always have a marking and engraving expert close to you to bring their expertise and know-how in qualifying your application, installing your equipment and training your collaborators.



Training



Technical Support



Maintenance

THE EXPRESSION OF THINGS

Humans have a unique quality: to be able to express themselves. With the cutting-edge technologies that we master for permanent marking and engraving, we are giving this power to objects.

Laser, mechanical engraving, scribing and dot peen: we are the only ones to pioneer and master all these types of marking.

We are a manufacturer of machines, CAD software and Consumables with support all over the world.

The result of the integration of pioneering technologies, we are constantly exploring new solutions to innovate and shape the future of the Expression of Things.

We know the entire chain, from creation to production and service to provide you with the offer, best suited to your needs.

Gravotech was born in 2008 from the merger of Gravograph, Technifor and Type3 and unified under one brand in 2021.

Gravotech in video



GRAVOTECH
E X P R E S S I O N O F T H I N G S

info.uae@gravotech.com

+971 4 456 5729

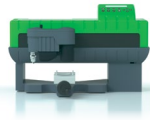
www.gravotech.ae

GRAVOTECH DMCC

SABA 1 Tower, Office 1307
Jumeirah Lake Towers,
Dubai, United Arab Emirates

Follow us



CNC
TABLES

IS200

Small signage and identification
engraving machine



IS400 / IS400 VOLUME

One of a kind metal engraving machine



ISx000

The large format CNC engraving machine

Application scope	● ●	● ● ● ●	● ● ●
Technology	Rotary, scribing	Rotary, scribing	Rotary, scribing
Marking area max. (L x H)	225 x 80 mm (9 x 3 in)	305 x 210 mm (12 x 8 in)	IS6000: 610 x 410 mm (24 x 16 in) IS7000: 610 x 815 mm (24 x 32 in) IS8000: 610 x 1220 mm (24 x 48 in)
Spindle power	20 W	90 W (optional spindle: 150 W)	90 - 200 W (optional spindle: 150, 750, 1k W)
Max. object height	30 mm (1.2 in)	IS400: 105 mm (4 in) IS400 Volume: 400 mm (15.75 in)	80 mm (3 in)

ENGRAVING
STATION

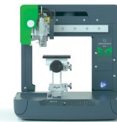
IM3

The iconic pantograph by
Gravotech



M10 JEWEL

Compact ring and bracelet
engraving machine



M20

Custom engraving for all kind
of purposes, from jewelry and
perfume to small industrial signage



M40/M40GIFT

Multi-purpose rotary engraving
machine for signage and gifts

Application scope	● ●	●	● ● ● ●	● ● ●
Technology	Rotary, scribing	Scribing	Rotary, scribing	Rotary, scribing
Marking area max. (L x H)	250 x 140 mm (9.9 x 5.5 in)	-	100 x 100 mm (4 x 4 in)	305 x 210 mm (12 x 8 in)
Spindle power	50 W	-	30 W	30 W
Max. object height	50 mm (2 in)	ø 12.5 - 80 mm (0.5 x 3.15 in)	100 mm (4 in)	110 mm (4.3 in)
Dimensions (L x W x H)	580 x 510 x 280 mm (22.8 x 20 x 11 in)	230 x 293 x 290 mm (9 x 11.5 x 11.4 in)	375 x 350 x 360 mm (14.8 x 14 x 14.2 in)	550 x 510 x 320 mm (21.7 x 20 x 12.6 in)

APPLICATIONS OF ENGRAVING, MARKING AND CUTTING

Look around you and you'll notice that most objects around you are marked, engraved or customized.

● Identification



● Personalization



● Signage



LASER TABLES



LS100

CO2 laser engraver for signage, creative cutting, and personalization



LS100EX

The signage and small series laser engraving machine



LS900

The large laser engraver that can do everything



LS1000XP

Large laser engraving and cutting machine for high productivity

Application scope	●●●●	●●●●	●●●●	●●●●●
Laser source	CO2	CO2, Fiber	CO2, Fiber, Edge	CO2
Power (W)	25 - 30 - 40 - 60	CO2: 25 - 30 - 40 - 60 CO2 Energy: 25 Fiber: 20 - 30	CO2: 40 - 60 - 80 Fiber: 20 - 30 - 50 Edge: (CO2: 40 / Fiber: 20 - 30 - 50)	60 - 80 - 100 - 150
Marking area max. (L x H)	460 x 305 mm (18 x 12 in)	610 x 305 mm (24 x 12 in)	610 x 610 mm (24 x 24 in)	1220 x 610 mm (48 x 24 in)
Lenses (in)	1.5 - 2.0 - 2.5 - 3.0 - 3.5 - 4.0	1.5 - 2.0 - 2.5 - 3.0 - 3.5 - 4.0	1.5 - 2.0 - 2.5 - 3.0 - 3.5 - 4.0	2.0 - 3.0 - 4.0
Max. object height	145 mm (5.7 in)	145 mm (5.7 in)	250 mm (9.8 in)	300 mm (11.8 in)

LASER STATIONS



WELASE™

Small laser engraving station



LW2 TOUCH

Fully automated laser marking station



DOT PEEN STATION

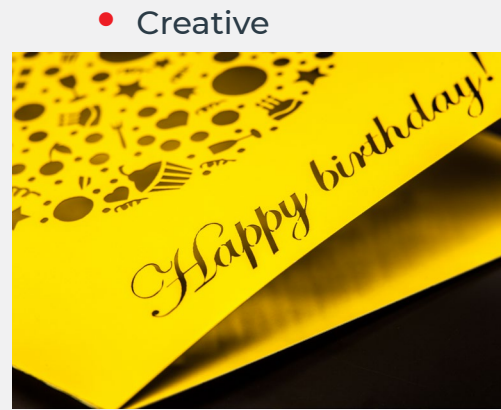


IMPACT

Benchtop dot peen marking station

Application scope	●●	●●	Application scope	●
Laser source	Fiber, Hybrid, Green, CO2	Fiber, Hybrid, Green	Technology	Dot peen Pneumatic or electromagnetic
Use rate	Adapted for small to medium batches	Fully automatic Adapted for high use rate	Software	Integrated traceability software with colour touchscreen
Marking area max. (L x H)	110 x 110 mm (4.3 x 4.3 in)	Up to 205 x 205 mm (8 x 8 in)	Marking area max. (L x H)	100 x 120 mm (4 x 4.7 in)
Max object Height	Fiber, Hybrid, Green: 100 mm (4 in) CO2: 180 mm (7 in)	Up to 322 mm (12.7 in)	Z axis stroke	300 mm (11.8 in)
Max object Weight	3 kg (6.6 lbs)	25 kg (55 lbs)	Z axis type	Manual or Motorized & programmable

Find them and you'll find Gravotech!



Our applications



INTEGRABLES MACHINES

INTEGRABLE LASER MARKERS



FIBER

Integrated laser marking system for metal and plastic parts



HYBRID

The best compromise between versatility, high quality and high speed to meet all your marking needs



GREEN

Integrated laser marking system to mark highly reflective materials and sensitive plastic materials



CO2

High-speed laser engraver: the best to mark organic materials and coated surfaces

Application scope	● ●	● ●	● ●	● ●
Wavelength (nm)	1 064	1 064	532	10 600
Power (W)	Fiber: 20 - 30 - 50 Fiber Energy: 20 - 30	10 - 20	5 - 10	30
Process automation	Industrial Ethernet Networks: PROFINET / ETHERNET IP			
Embedded intelligence	Autonomous / Programmable by PLC / No PC required / Traceability Management			
Laser classification	Class 4 Laser system, possibility to switch in Class 1 for integration on a station or equipped with Mini Inline module.			

INTEGRABLE DOT PEEN & SCRIBING



XF510 p

The fastest pneumatic dot peen marking machine on the market



XF510 m

The precise and consistent electromagnetic dot peen marking machine



XF510 r

The quiet metal marking machine



XF530

Deep and indelible dot peen marking

Application scope	●	●	●	●
Technology	Dot peen Pneumatic	Dot peen Electromagnetic	Scriving	Dot peen Pneumatic or Electromagnetic
Main advantage	Speed	2D codes	Quiet	Deep marking
Marking area max. (L x H)	Cp: 50 x 20 mm (2 x 0.8 in), Sp: 100 x 80 mm (4 x 3.15 in), Dp: 200 x 80 mm (7.9 x 3.15 in)	Cm: 50 x 20 mm (2 x 0.8 in), Sm: 100 x 80 mm (4 x 3.15 in), Dm: 200 x 80 mm (7.9 x 3.15 in)	Cr: 40 x 50 mm (1.6 x 2 in), Sr: 80 x 50 mm (3.15 x 2 in), Dr: 160 x 50 mm (6.3 x 2 in)	200 x 50 mm (7.9 x 2 in)
Material hardness (HRC)	< 62	< 62	< 62	< 62

CONTROL UNIT



XCOM

CONNECTED TOUCH-SCREEN CONTROLLER

XCOM is the solution to pilot dot-peen and scribing machines and to control their integration on production lines. Connected to the main 4.0 industrial environments, XCOM is the most communicative and autonomous control unit on the market.

Want to know more?

